



Wireless

Columbia State Community College is now offering **free** wireless access supporting both the 802.11b and 802.11g protocols to all staff, faculty, and students.

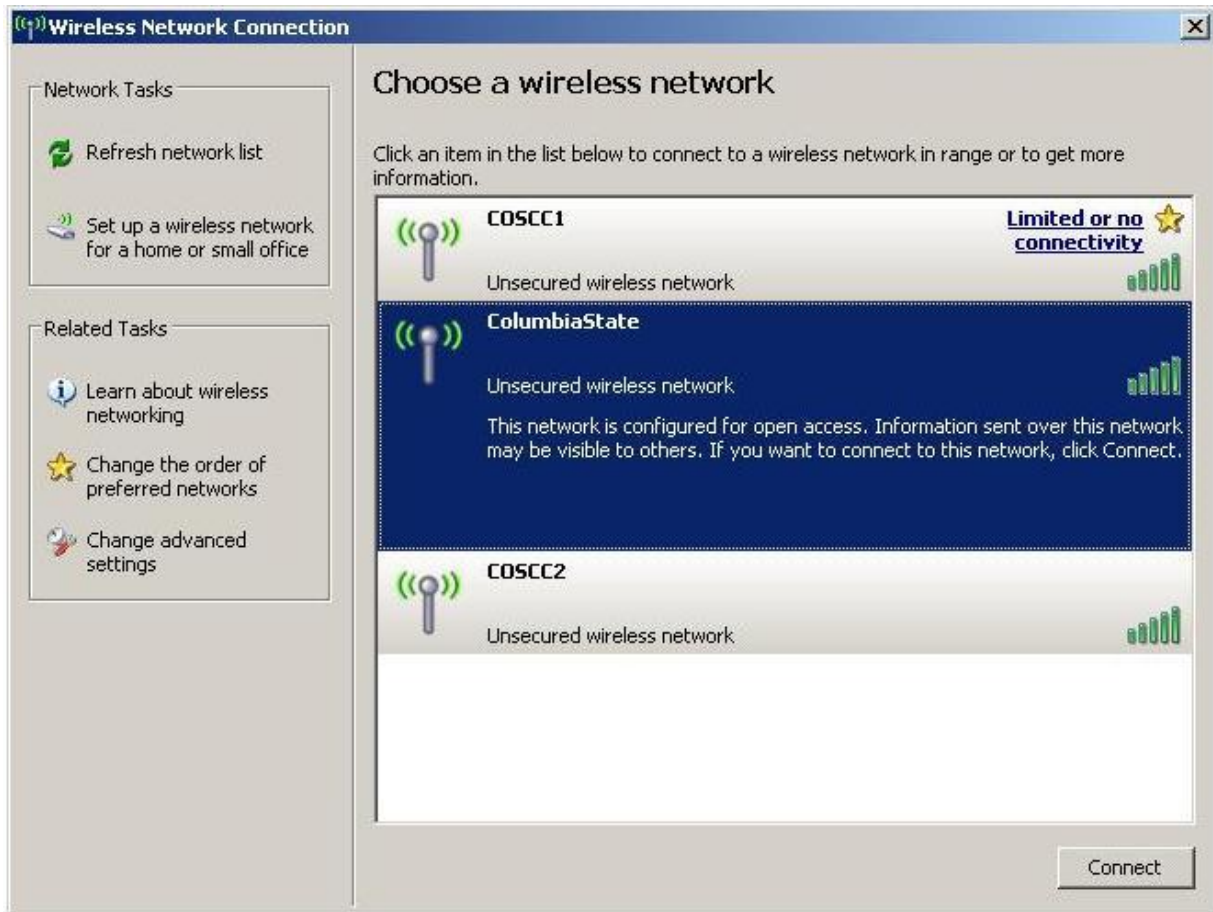
Wireless access is available at **all** sites.

The following screenshots are what you can expect if connecting using Microsoft XP with Internet Explorer Version 6. Other configurations may work but are not officially supported at this time.

1. To connect to the Wireless network, right click on the Wireless Icon on the toolbar and select "View Available Wireless Networks".



2. On the screen below, select "ColumbiaState" and click the "Connect" button.



3. You may receive a warning about an "unsecured network". Click "Connect anyway".

4. After connecting, open a web browser to any website, for example: <http://www.google.com>. The request will be re-directed to a network authentication page. A "Security Alert", shown here may appear. Click "OK".



5. A second "Security Alert" may appear concerning the security certificate. Click "Yes" to accept the certificate.



6. The Authentication page shown here should appear.



5. Input a PVT username and password and click "Submit" If accepted, you will be directed to the originally requested webpage.

No further action is required until the session expires. The expiration time is currently set for 12 hours.

If you experience problems or receive an error message, please contact the Information Technology helpdesk at 931-540-2650 or send a message to helpdesk@columbiastate.edu.

Links:

[Columbia State Community College](#)
[Information Technology](#)
[Helpdesk](#)